



**India Meteorological Department  
(Ministry of Earth Sciences)**

**National Bulletin No. 6 (BOB/06/2023)**

**TIME OF ISSUE: 0900 HOURS IST**

**DATED: 02.12.2023**

**FROM: INDIA METEOROLOGICAL DEPARTMENT (FAX NO. 24643965/24699216/24623220)**

**TO: CONTROL ROOM, NDM, MINISTRY OF HOME AFFAIRS (FAX.NO. 23093750)**

**CONTROL ROOM NDMA (FAX.NO. 26701729)**

**CABINET SECRETARIAT (FAX.NO.23012284, 23018638)**

**PS TO HON'BLE MINISTER FOR S & T AND EARTH SCIENCES (FAX NO.23316745)**

**SECRETARY, MOES (FAX NO. 24629777)**

**H.Q. (INTEGRATED DEFENCE STAFF AND CDS) (FAX NO. 23005137/23005147)**

**DIRECTOR GENERAL, DOORDARSHAN (23385843)**

**DIRECTOR GENERAL, AIR (23421105, 23421219)**

**PIB MOES (FAX NO. 23389042)**

**UNI (FAX NO. 23355841)**

**D.G. NATIONAL DISASTER RESPONSE FORCE (NDRF) (FAX NO. 26105912, 2436 3260)**

**DIRECTOR, PUNCTUALITY, INDIAN RAILWAYS (FAX NO. 23388503)**

**CHIEF SECRETARY, ODISHA (FAX NO. 0674-2536660)**

**CHIEF SECRETARY, WEST BENGAL (FAX NO. 033-22144328)**

**CHIEF SECRETARY, ANDHRA PRADESH (FAX NO. 0863-2441029, 08645-246600)**

**CHIEF SECRETARY, TAMIL NADU (FAX NO 044-25672304)**

**CHIEF SECRETARY, PUDUCHERRY (FAX NO 0413-2334145)**

**ADMINISTRATOR, ANDAMAN & NICOBAR ISLANDS (FAX NO. 03192- 232656)**

**Sub: Depression intensified into Deep Depression over Southwest Bay of Bengal (Pre-Cyclone Watch for Andhra Pradesh and North Tamil Nadu-Puducherry Coasts: **Yellow Message**)**

The depression over Southwest Bay of Bengal moved west-northwestwards with a speed of 18 kmph during past 06 hours, intensified into a deep depression and lay centered at 0530 hours IST of today, the 2<sup>nd</sup> December, 2023 over the same region near Latitude 10.5°N and Longitude 84.1°E, about 500 km east-southeast of Puducherry, 510 km east-southeast of Chennai, 630 km southeast of Nellore, 710 km south-southeast of Bapatla and 710 km south-southeast of Machilipatnam.

It is likely to move west-northwestwards, intensify into a Cyclonic Storm over Southwest Bay of Bengal during next 24 hours. Thereafter, it would move northwestwards and reach westcentral Bay of Bengal off south Andhra Pradesh and adjoining north Tamilnadu coasts by 4<sup>th</sup> December forenoon. Thereafter, it would move nearly northwards almost parallel and close to south Andhra Pradesh coasts and cross South Andhra Pradesh coasts between Nellore and Machilipatnam during forenoon of 5<sup>th</sup> December as a **Cyclonic Storm** with a maximum sustained wind speed of 80-90 kmph gusting to 100 kmph.

### Track and Intensity Forecasts:

Date/Time (IST)	Position (Lat. °N/ long. °E)	Maximum sustained surface wind speed (Kmph)	Category of cyclonic disturbance
02.12.23/0530	10.5/84.1	50-60 kmph gusting to 70 kmph	Deep Depression
02.12.23/1130	10.7/83.7	50-60 kmph gusting to 70 kmph	Deep Depression
02.12.23/1730	11.0/83.3	55-65 kmph gusting to 75 kmph	Deep Depression
02.12.23/2330	11.4/82.9	60-70 kmph gusting to 80 kmph	Cyclonic Storm
03.12.23/0530	11.8/82.5	60-70 kmph gusting to 80 kmph	Cyclonic Storm
03.12.23/1730	12.5/81.9	70-80 kmph gusting to 90 kmph	Cyclonic Storm
04.12.23/0530	13.5/81.1	80-90 kmph gusting to 100 kmph	Cyclonic Storm
04.12.23/1730	14.5/80.5	85-95 kmph gusting to 105 kmph	Cyclonic Storm
05.12.23/0530	15.5/80.7	85-95 kmph gusting to 105 kmph	Cyclonic Storm
05.12.23/1730	16.5/81.1	70-80 kmph gusting to 90 kmph	Cyclonic Storm
06.12.23/0530	17.6/82.2	45-55 kmph gusting to 65 kmph	Depression
06.12.23/1730	18.5/83.6	35-45 kmph gusting to 55 kmph	Depression

### Warnings:

#### (i) Rainfall Warning (graphics enclosed):

- **North Coastal Tamil Nadu & Puducherry:** Light to moderate rainfall at most places with isolated heavy rainfall is very likely on 2<sup>nd</sup> December and heavy to very heavy rainfall at a few places on 3<sup>rd</sup> Dec. and isolated heavy rainfall on 4<sup>th</sup> December and decrease thereafter.
- **Coastal Andhra Pradesh:** Light to moderate rainfall at most places with heavy to very heavy rainfall at a few places and extremely heavy rainfall at isolated places on 3<sup>rd</sup> and 4<sup>th</sup> December. Isolated heavy to very heavy rainfall is likely over south coastal Andhra Pradesh and heavy to very heavy rainfall at a few places and extremely heavy rainfall at isolated places likely over North coastal Andhra Pradesh on 5<sup>th</sup> December.
- **Rayalaseema:** Light to moderate rainfall at most places with **isolated heavy to very heavy rainfall** on 3<sup>rd</sup> & 4<sup>th</sup> December.
- **Odisha:** Light to moderate rainfall at most places with **isolated heavy rainfall** is likely over south Coastal and adjoining south Interior Odisha on 4<sup>th</sup> and **isolated heavy to very heavy rainfall** over the same region on 5<sup>th</sup> and 6<sup>th</sup> December.

#### (ii) Wind warning:

- **Southwest Bay of Bengal along & off north Tamil Nadu-Puducherry Coasts:**  
**Squally wind** speed reaching **50-60 kmph gusting to 70 kmph** is prevailing over Southwest Bay of Bengal. It is likely to gradually increase becoming **Gale Wind** speed reaching **60-70 kmph gusting to 80 kmph** from 2<sup>nd</sup> December night and **70-80 kmph gusting to 90 kmph** from 3<sup>rd</sup> evening for subsequent 24 hours.
- **Southeast Bay of Bengal:**  
**Squally weather** with wind speed reaching **45-55 kmph gusting to 65 kmph** is prevailing over Southeast Bay of Bengal during next 24 hours and likely to decrease thereafter.
- **Westcentral Bay of Bengal and along & off south Andhra Pradesh Coast:**  
**Squally wind** speed reaching **35-45 kmph gusting to 55 kmph** is likely to prevail over westcentral Bay of Bengal from 2<sup>nd</sup> December evening. It is likely to gradually increase becoming **55-65 kmph gusting to 75 kmph** from 3<sup>rd</sup> December morning. It is likely to increase further becoming **Gale Wind** speed reaching **70-80 kmph gusting to 90 kmph** from 3<sup>rd</sup> evening and **80-90 kmph gusting to 100 kmph** from 4<sup>th</sup> evening for subsequent 12 hours. It would gradually decrease thereafter.

- **Along & off north Andhra Pradesh Coast:**

**Squally wind** speed reaching **45-55 kmph gusting to 65 kmph** likely from 4<sup>th</sup> December evening, likely to gradually increase becoming **55-65 kmph gusting to 75 kmph** from 5<sup>th</sup> December evening for subsequent 12 hours. It would gradually decrease thereafter.

- **Along & off South Odisha Coast:**

**Squally wind** speed reaching **35-45 kmph gusting to 55 kmph** likely from 4<sup>th</sup> December evening, likely to gradually increase becoming **40-50 kmph gusting to 60 kmph** from 5<sup>th</sup> December evening for subsequent 12 hours. It would gradually decrease thereafter.

**(iii) Sea Condition:**

- **Southeast Bay of Bengal:**

**Rough to very Rough** Sea condition is likely over Southeast Bay of Bengal on 2<sup>nd</sup> December and would improve thereafter.

- **Southwest Bay of Bengal and along & off north Tamil Nadu-Puducherry Coasts:**

**Rough to Very Rough sea condition** is prevailing over the region. It is likely to become **very rough to high** from 3<sup>rd</sup> December morning for subsequent 24 hours and improve thereafter gradually.

- **Westcentral Bay of Bengal and along & off south Andhra Pradesh Coast:**

**Rough to Very Rough to sea condition** is likely from 2<sup>nd</sup> December evening, becoming **very rough to high** from 3<sup>rd</sup> December morning till 5<sup>th</sup> December.

- **Along & off North Andhra Pradesh Coast:**

**Rough to Very Rough to sea condition** is likely from 4<sup>th</sup> December evening till 5<sup>th</sup> December.

- **Along & off South Odisha Coast:**

**Rough to Very Rough to sea condition** is likely from 4<sup>th</sup> December evening till 5<sup>th</sup> December.

**(iv) Fishermen Warning (graphics attached):**

Fishermen are advised not to venture into:

- Southeast Bay of Bengal on 2<sup>nd</sup> December.
- Southwest Bay of Bengal and along & off North Tamil Nadu-Puducherry Coasts during 2<sup>nd</sup> to 4<sup>th</sup> December.
- Westcentral Bay of Bengal and along & off Andhra Pradesh Coast from 2<sup>nd</sup> December morning to 5<sup>th</sup> December.
- Along & off South Odisha coast from 4<sup>th</sup> December evening till 5<sup>th</sup> December

The Fishermen out at sea are advised to return to coast during next 12 hours.

**(v) Storm Surge (Graphics enclosed):**

Storm surge of about 1-1.5 meter above astronomical tide likely to inundate south Coastal Andhra Pradesh districts at the time of landfall.

**(vi) Damage Expected over coastal districts of South Andhra Pradesh and adjoining coastal districts of North Tamil Nadu-Puducherry:**

- Damage to thatched huts.
- Possibilities of damage to vulnerable structure.
- Breaking of tree branches and uprooting of small & medium sized trees.
- Minor damage to power and communication lines due to breaking of branches and uprooting of trees.
- Major damage to Kutcha and minor damage to Pucca roads due to heavy rain.
- Damage to paddy crops, horticultural crops and orchards.
- Sea water inundation in low lying areas after erosion of Kutcha embankments
- Inundation of low lying areas in coastal districts due to heavy rainfall and flash flood

- Localized Flooding of roads and closure of underpasses mainly in urban areas of the above region.
- Occasional reduction in visibility due to heavy rainfall.
- Disruption of traffic due to water logging and squally winds
- Localized Landslides/Mudslides
- It may lead to riverine flooding in some river catchments (for riverine flooding please visit Web page of CWC)

**(vi) Action Suggested for coastal districts of South Andhra Pradesh and adjoining coastal districts of North Tamil Nadu-Puducherry:**

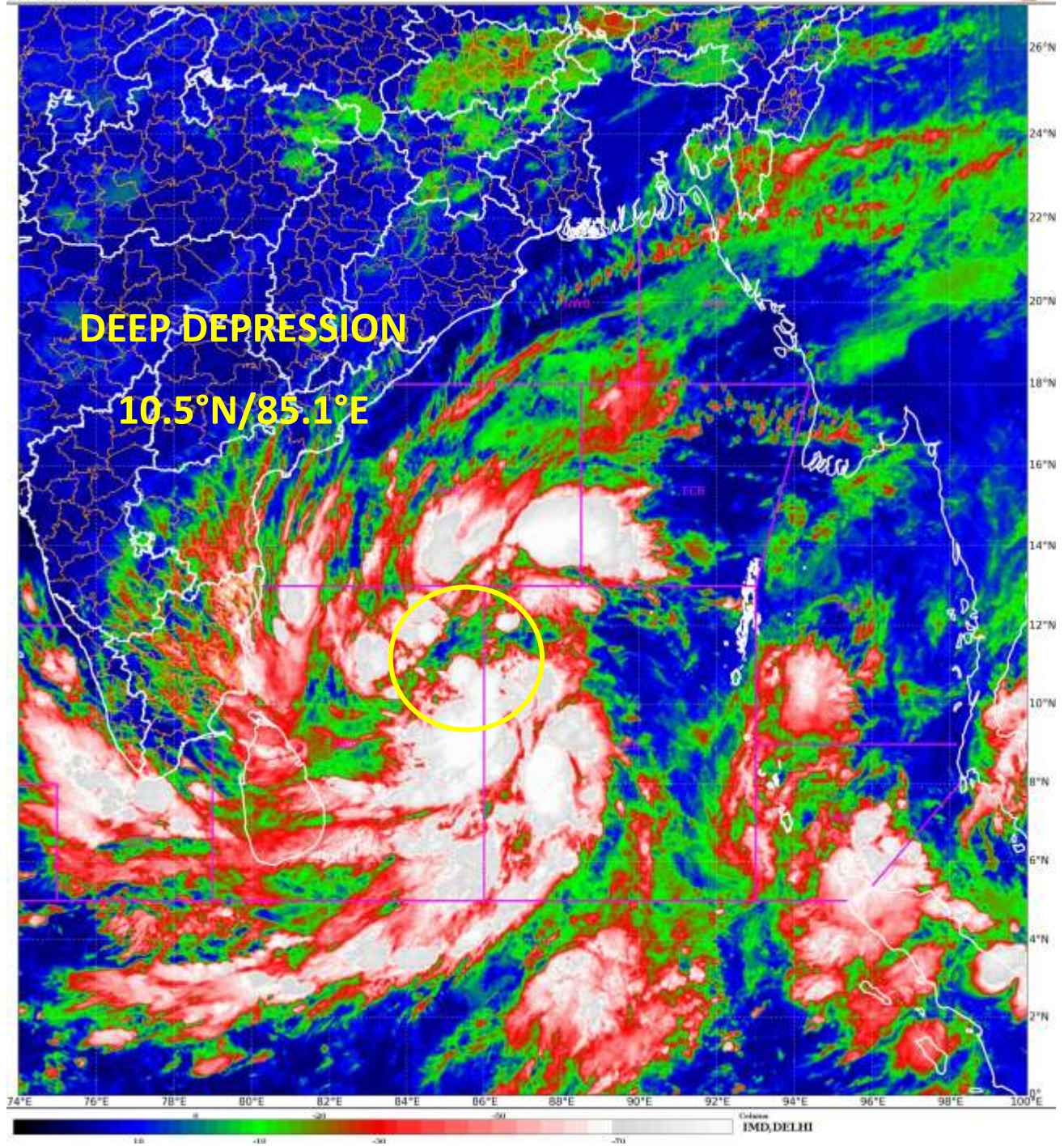
- Total suspension of fishing operations.
- Fishermen out at sea are advised to return to coast by 1st December
- Surface transport and shipping operations need to be regulated
- Onshore & Offshore operation need to be regulated as per guidelines
- Coastal hutment dwellers to be in safer places.
- People in affected areas to remain indoors.
- Avoid going to areas that face the water logging problems often.
- Avoid staying in vulnerable structure.

**The system is under continuous surveillance and the next message will be issued at 1130 hours IST of today, the 02<sup>nd</sup> December, 2023.**

**(SP Singh)  
Scientist C, Cyclone Warning, New Delhi**

*Copy to: ACWC Chennai/ ACWC Kolkata/ CWC Bhubaneswar/ CWC Vishakhapatnam/ MC Amravati*

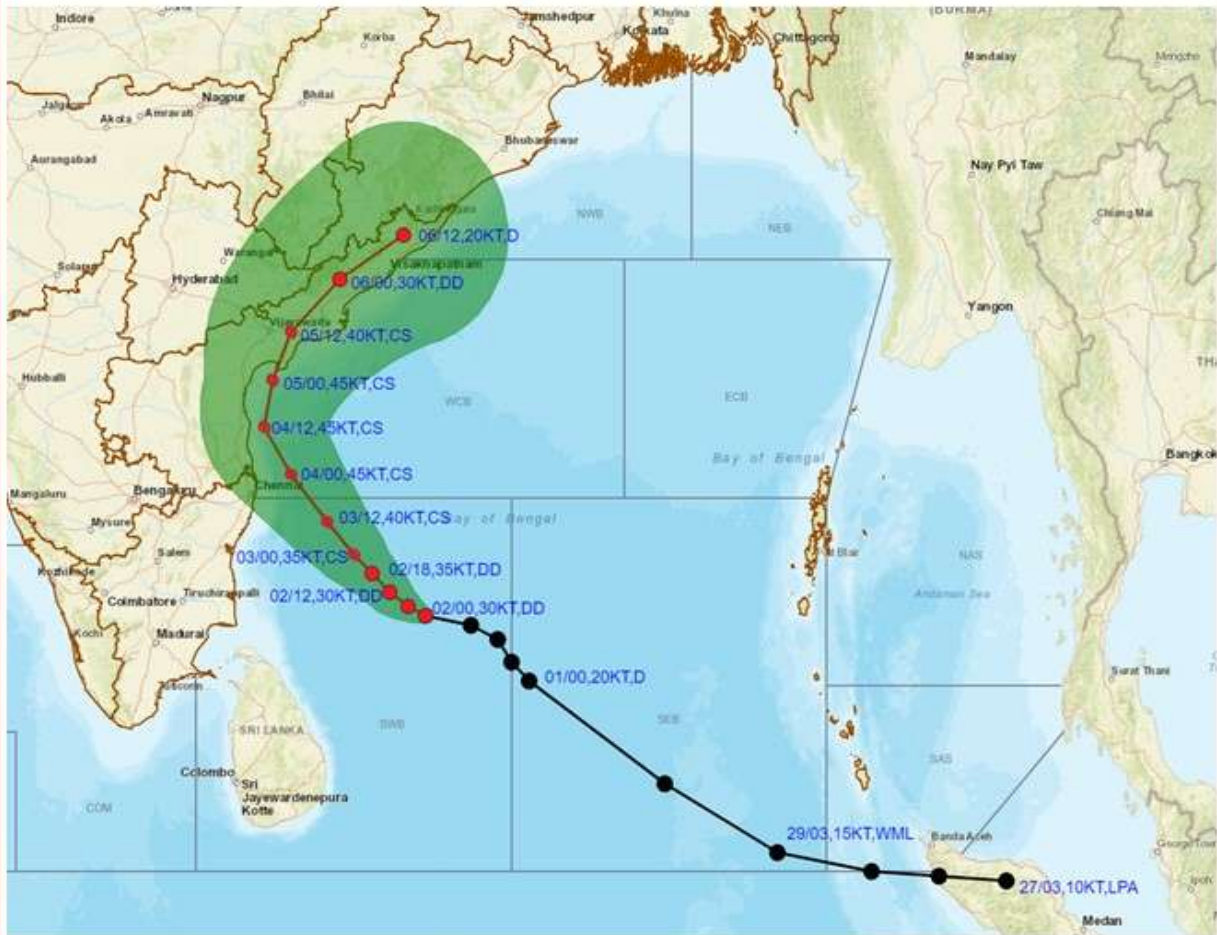








**OBSERVED AND FORECAST TRACK ALONGWITH CONE OF UNCERTAINTY IN ASSOCIATION WITH DEEP DEPRESSION OVER SOUTHWEST BAY OF BENGAL BASED ON 0000 UTC (0530 IST) OF 02<sup>ND</sup> DECEMBER 2023.**



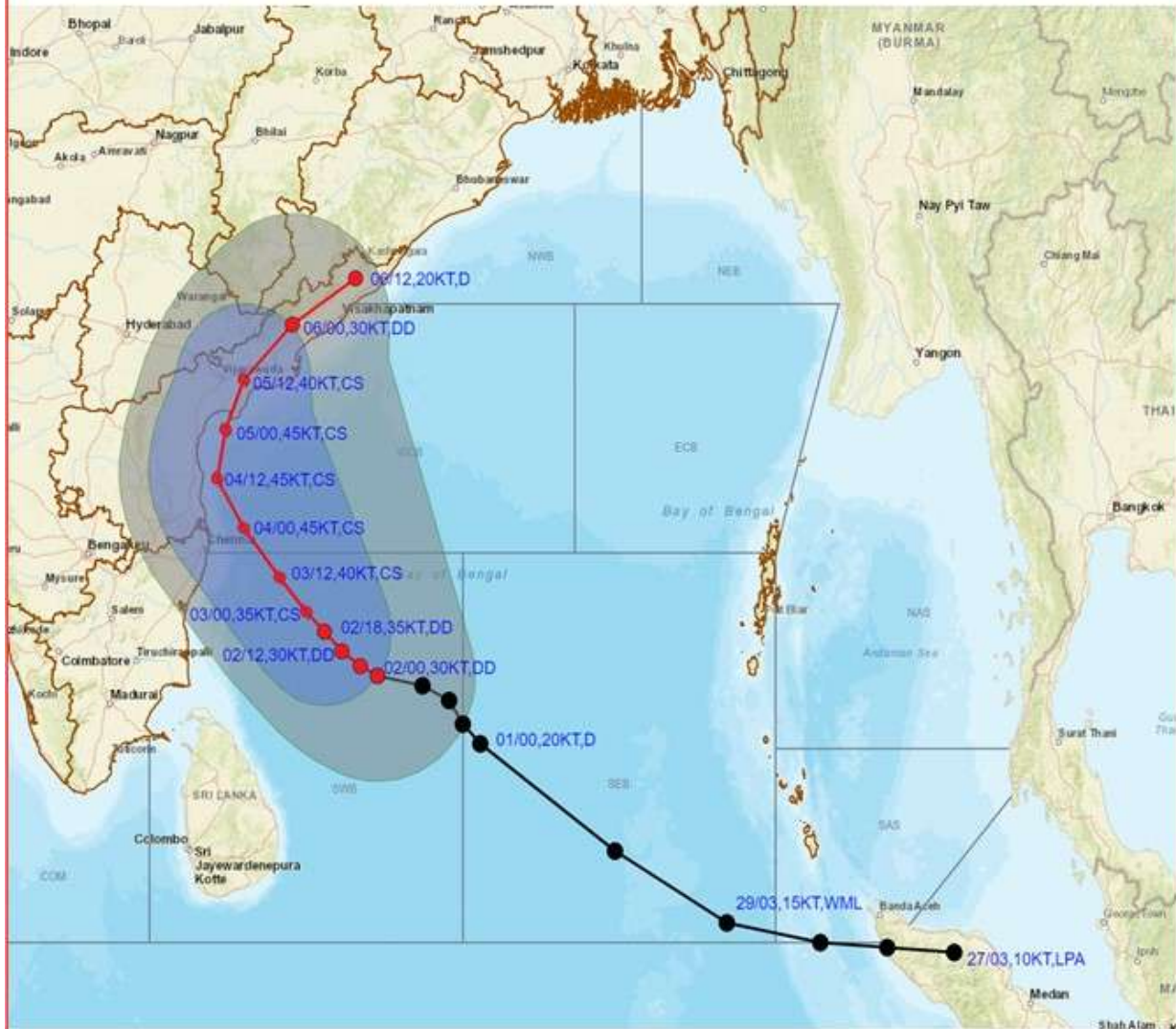
DATE/TIME IN UTC  
 IST=UTC + 0530  
 L: LOW PRESSURE AREA  
 WML: WELL MARKED LOW PRESSURE AREA  
 D: DEPRESSION (17-27 KT)  
 DD: DEEP DEPRESSION (28-33 KT)  
 CS: CYCLONIC STORM (34-47 KT)  
 SCS: SEVERE CYCLONIC STORM (48-63KT)  
 VSXS: VERY SEVERE CYCLONIC STORM (64-89 KT)  
 ESCS: EXTREMELY SEVERE CYCLONIC STORM (90-119 KT)  
 SuCS: SUPER CYCLONIC STORM (≥ 120 KT)

- LESS THAN 34 KT
- 34-47 KT
- ≥ 48 KT
- OBSERVED TRACK
- FORECAST TRACK
- ▲ CONE OF UNCERTAINTY

Forecast Date and Time (UTC)	DISTANCE (KM) AND DIRECTION FROM STATIONS				
	MO PONDICHERRY	CHENNAI/MINAMBAKKAM	NELLORE	BAPATLA	MACHILIPATNAM/ FRANCHPET
02.12.23/0000	490, ESE	500, ESE	620, SE	710, SSE	710, SSE
03.12.23/0000	290, E	280, ESE	400, SE	500, SSE	510, SSE
04.12.23/0000	230, NE	120, ENE	160, SE	270, SSE	300, S
05.12.23/0000	410, NNE	290, NNE	150, NNE	60, SSE	100, SSW
06.12.23/0000	680, NNE	560, NNE	430, NE	270, NE	200, NE



**OBSERVED AND FORECAST TRACK ALONG WITH QUADRANT WIND DISTRIBUTION IN ASSOCIATION WITH DEEP DEPRESSION OVER SOUTHWEST BAY OF BENGAL BASED ON 0000 UTC (0530 IST) OF 02<sup>ND</sup> DECEMBER 2023.**



DATE/TIME IN UTC  
 IST=UTC + 0530  
 L: LOW PRESSURE AREA  
 WML: WELL MARKED LOW PRESSURE AREA  
 D: DEPRESSION (17-27 KT)  
 DD: DEEP DEPRESSION (28-33 KT)  
 CS: CYCLONIC STORM (34-47 KT)  
 SCS: SEVERE CYCLONIC STORM (48-63KT)  
 VSCS: VERY SEVERE CYCLONIC STORM (64-89 KT)  
 ESCS: EXTREMELY SEVERE CYCLONIC STORM (90-119 KT)  
 SuCS: SUPER CYCLONIC STORM ( $\geq 120$  KT)

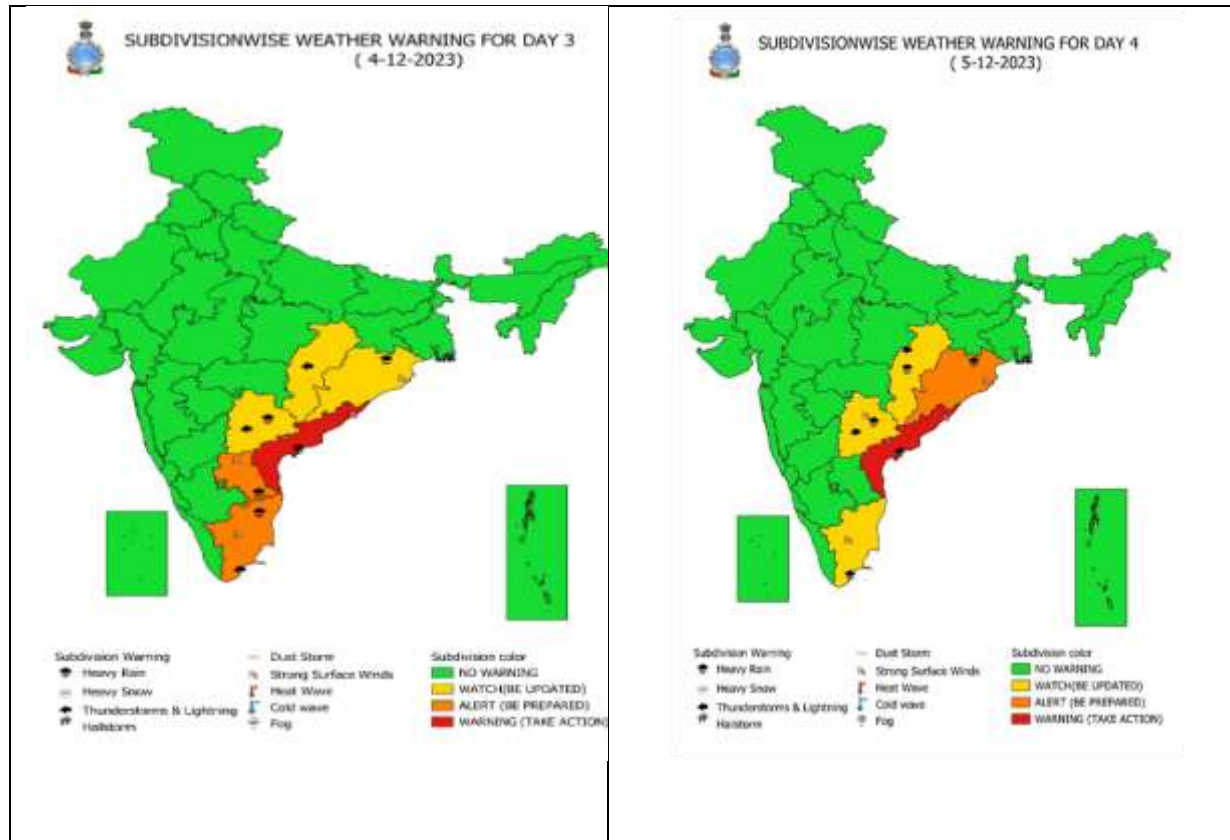
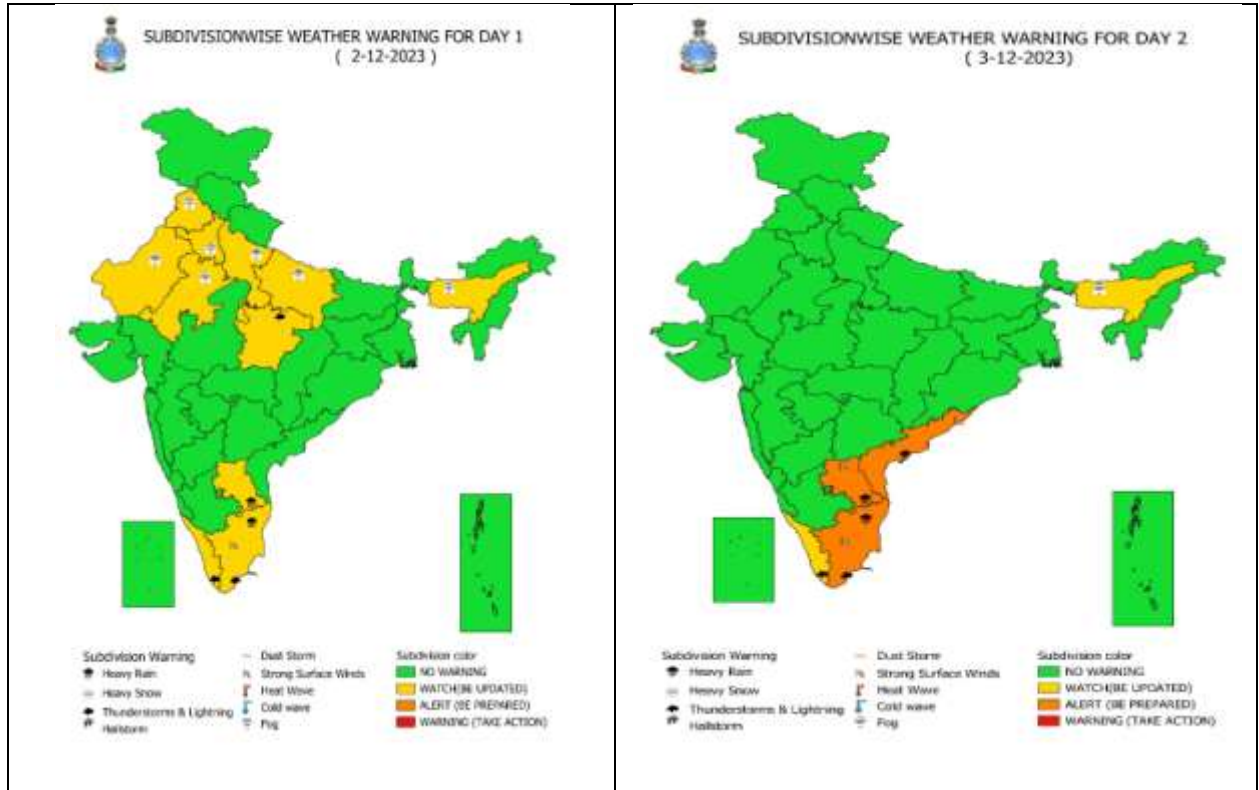
● LESS THAN 34 KT  
 ○ 34-47 KT  
 ⊙  $\geq 48$  KT  
 — OBSERVED TRACK  
 — FORECAST TRACK  
 ○ CONE OF UNCERTAINTY  
 AREA OF MAXIMUM SUSTAINED WIND SPEED:  
 ■ 28-33 KT (52-61 KMPH)  
 ■ 34-49 KT (62-91 KMPH)  
 ■ 50-63 KT (92-117 KMPH)  
 ■  $\geq 64$  KT ( $\geq 118$  KMPH)

**IMPACT OVER THE SEA**

MSW (knot/kmph)	Impact	Action
28-33 (52-61)	Very rough seas	Total suspension of fishing operations
34-49 (62-91)	High to very high seas	Total suspension of fishing operations
50-63 (92-117)	Very high seas	Total suspension of fishing operations
$\geq 64$ ( $\geq 118$ )	Phenomenal	Total suspension of fishing operations



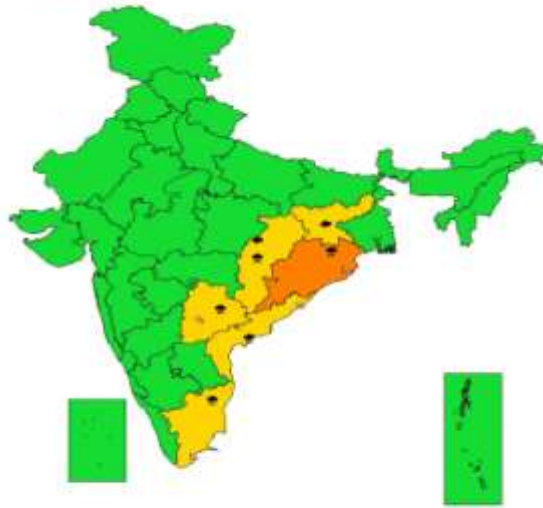
# Weather Warning Graphics







SUBDIVISIONWISE WEATHER WARNING FOR DAY 5  
( 6-12-2023)



- |  |   |   |
|--|---|---|
| <ul style="list-style-type: none"> <li>☁ Heavy Rain</li> <li>❄ Heavy Snow</li> <li>⚡ Thunderstorms &amp; Lightning</li> <li>⚡ Hailstone</li> </ul> | <ul style="list-style-type: none"> <li>☁ Dust Storm</li> <li>🌪 Strong Surface Winds</li> <li>🌡 Heat Wave</li> <li>🌡 Cold wave</li> <li>🌫 Fog</li> </ul> | <ul style="list-style-type: none"> <li>🟢 Subdivision color</li> <li>🟢 NO WARNING</li> <li>🟡 WATCH (BE UPDATED)</li> <li>🟠 ALERT (BE PREPARED)</li> <li>🔴 WARNING (TAKE ACTION)</li> </ul> |
|--|---|---|

## WARNING



Heavy Rain



Heavy Snow



Thunderstorm



Dust Storm



Strong Winds



Visibility



Cyclone



Squall/ Hail



Frost



Cold Wave



Heat Wave



Sea State

## Fishermen warning graphics

Day 1: 02.12.2023/05:30AM to 03.12.2023/05:30AM



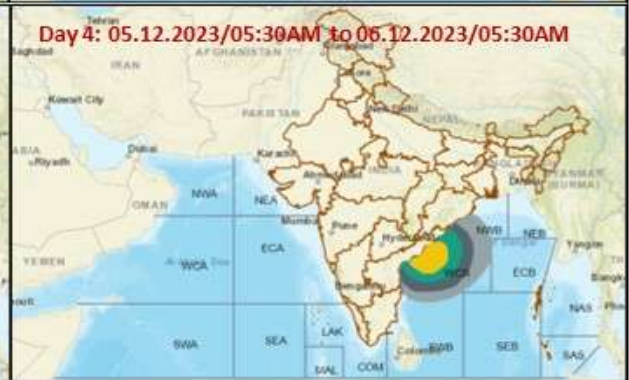
Day 2: 03.12.2023/05:30AM to 04.12.2023/05:30AM



Day 3: 04.12.2023/05:30AM to 05.12.2023/05:30AM



Day 4: 05.12.2023/05:30AM to 06.12.2023/05:30AM



Squally WX with wind speed 40-45 kmph gusting to 55 kmph

Squally WX with wind speed 45-55 kmph gusting to 65 kmph

Squally wind with speed 50-60 kmph gusting to 70 kmph

CS with Gale wind speed 60-90 kmph gusting to 110 kmph

**Fishermen are advised not to venture into the marked areas.**

### Storm Surge Warning Graphics based on Forecast Track

